

P-500

Professional Line

Electric closing machine 530 mm. width

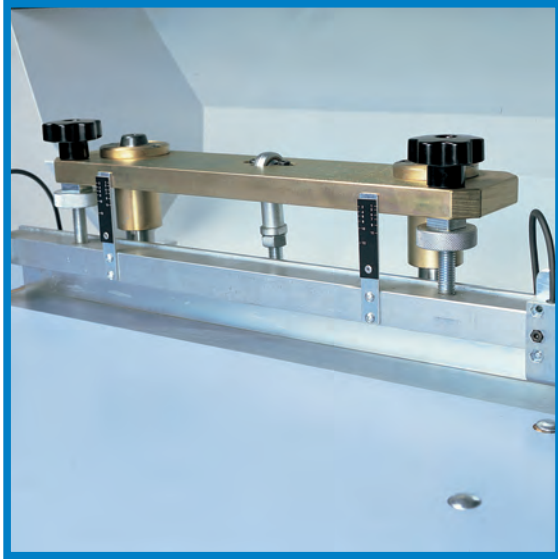
Easy to use, economic, machine suitable for large range of products.

- Easy to install
- Easy to use
- Low price
- Low maintenance costs
- Maximum reliability



Electric closing machine 530 mm. width

The Company reserves itself the right to modify the features of the products shown in this catalogue.

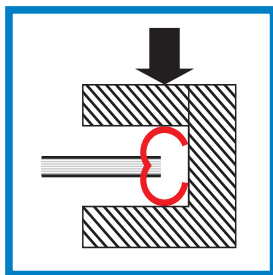


Closing press



Sample bound.

BINDING SYSTEM






HOW IT WORKS


Binding is an easy thing with the P-500: the operator only needs to insert manually the wire (and eventually the hanger) into the punched book, place it under the closing device and press the footswitch.

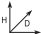
FEATURES


- Maximum closing length: 530 mm.
- Footswitch control.
- Adjustable for closing any diameter.
- Maximum output: up to 1000 bindings/hour, depending on materials used and skill of operator.

	 \varnothing inch	 mm
PITCH	DIAMETER	BIND THICK
3:1"	3/16"	4
	1/4"	5
	5/16"	6,5
	3/8"	8,5
	7/16"	10
2:1"	1/2"	11,5
	9/16"	12,5
	5/8"	14
	3/4"	17
	7/8"	20
	1"	23
	1" 1/4"	29

TECHNICAL SPECIFICATIONS

 240/400 V 3-phase 50/60 Hz; 1 Kw

 H 1100 x D 710 x L 1097 mm.

 102 Kg

